



Since 1949

# Ranchi Women's College

(A Constituent Autonomous College Under Ranchi University)

Ranchi - 834001

AQAR – 2022– 2023

Criterion I – Curricular Aspects

## 1.4 Feedback System

1.4.1 - Structured feedback and review of the syllabus (semester-wise / year-wise) is obtained from 1) Students 2) Teachers 3) Employers and 4) Alumni

### Students Feedback Report (2022-2023)

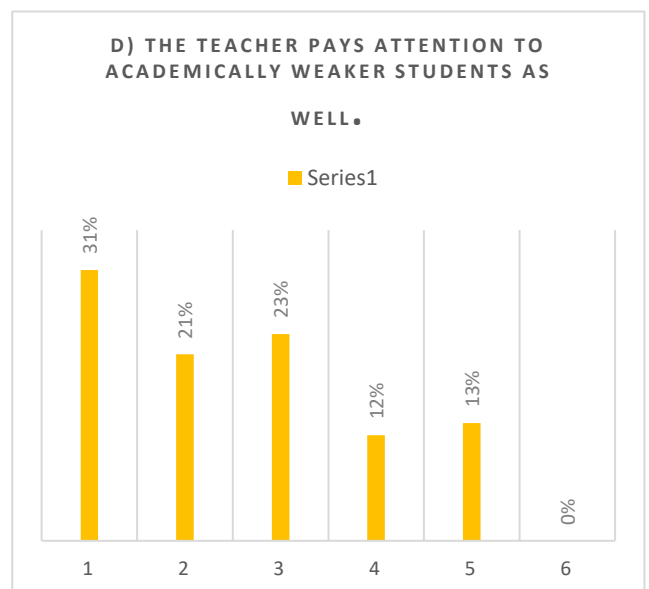
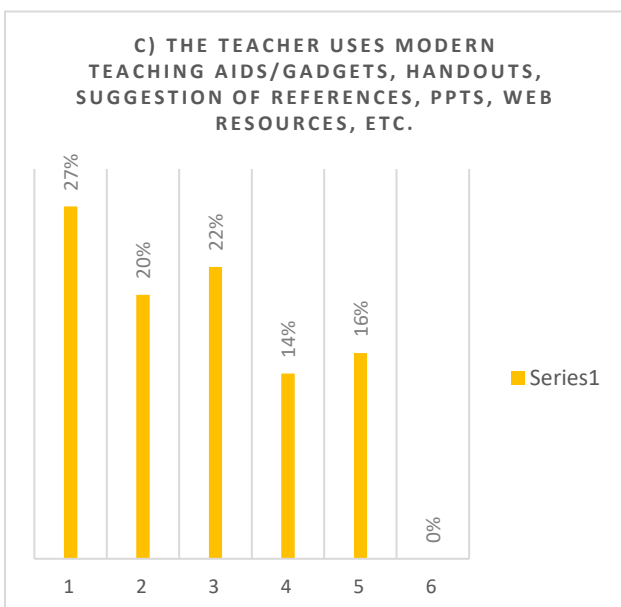
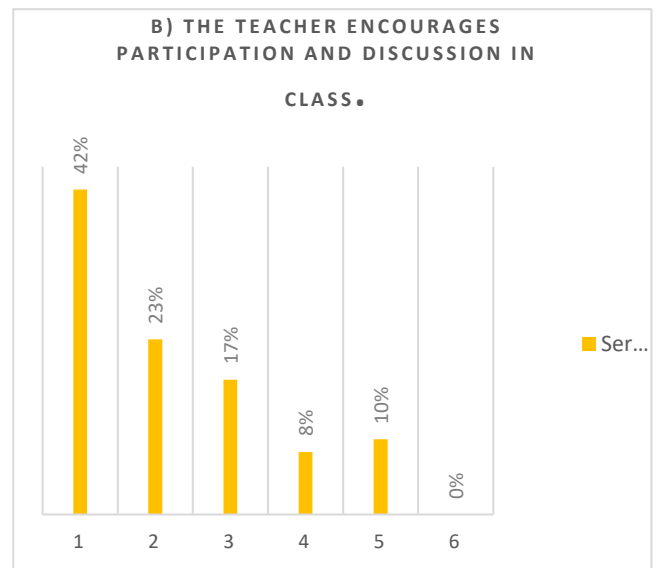
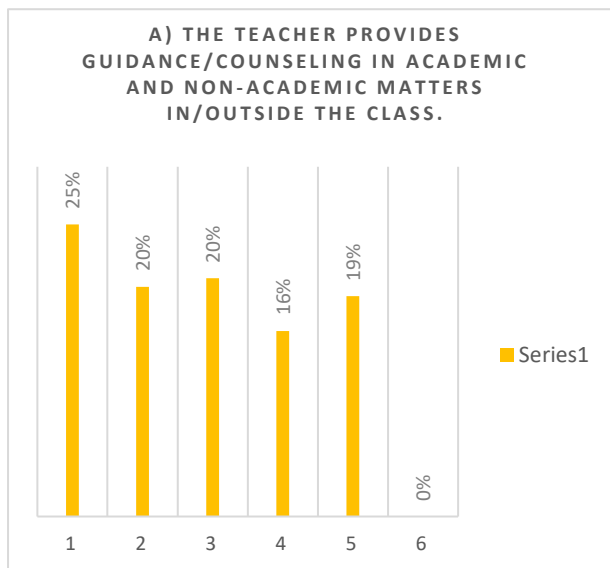
Table

Questions	Total	Excellent %	Good %	Average %	Poor %	Very Poor %	Not Answered %	Total
a) The teacher provides guidance/counseling in academic and non-academic matters in/outside the class.	2412	25%	20%	20%	16%	19%	0%	100%
b) The teacher encourages participation and discussion in class. (Teacher-Student, Student-Student)	2412	42%	23%	17%	8%	10%	0%	100%
c) The teacher uses modern teaching aids/gadgets, handouts, suggestion of references, ppts, web resources, etc.	2412	27%	20%	22%	14%	16%	0%	100%
d) The teacher pays attention to academically weaker students as well.	2412	31%	21%	23%	12%	13%	0%	100%
e) The teacher is regular and punctual in class.	2412	39%	22%	18%	9%	12%	0%	100%

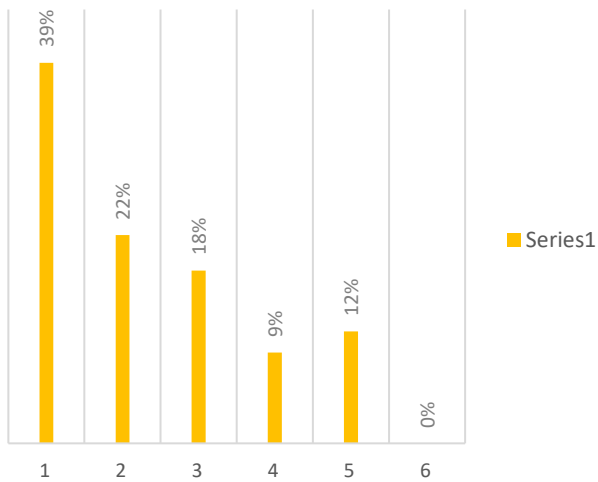
f) The teacher invites opinion and questions on subject matter from students.	2412	40%	25%	18%	8%	9%	0%	100%
g) The teacher inspires students for ethical conduct.	2412	38%	24%	19%	9%	9%	0%	100%
a) Periodical assessments are conducted as per schedule.	2412	33%	24%	21%	10%	10%	1%	100%
b) The teacher covers the entire syllabus in time.	2412	42%	24%	16%	8%	10%	0%	100%
c) The teacher explains the topics efficiently.	2412	40%	26%	17%	8%	9%	1%	100%
a) Periodical assessments are conducted as per schedule.	2412	35%	25%	20%	9%	9%	2%	100%
b) The teacher uses non-traditional methods of evaluation like quiz, seminars, assignments, classroom presentations/participation (or any other method).	2412	30%	23%	22%	13%	11%	1%	100%
c) For better academic performance, do you think you need?	2412	38%	24%	22%	6%	8%	2%	100%
Rank the following facilities in a scale between 1 to 5. 5-Excellent 1-Very Poor [Sports]	2412	17%	19%	27%	18%	15%	4%	100%
Rank the following facilities in a scale between 1 to 5. 5-Excellent 1-Very Poor [Library]	2412	24%	21%	24%	16%	13%	2%	100%
Rank the following facilities in a scale between 1 to 5. 5-Excellent 1-Very Poor [Internet facility]	2412	9%	12%	20%	21%	34%	4%	100%
Rank the following facilities in a scale between 1 to 5. 5-Excellent 1-Very Poor [Extra Curricular Activities]	2412	16%	17%	25%	21%	17%	4%	100%
Rank the following facilities in a scale between 1 to 5. 5-Excellent 1-Very Poor [Washrooms]	2412	11%	13%	22%	22%	28%	4%	100%
Rank the following facilities in a scale between 1 to 5. 5-Excellent 1-Very Poor [Drinking Water]	2412	12%	13%	21%	22%	29%	4%	100%
Rank the following facilities in a scale between 1 to 5. 5-Excellent 1-Very Poor [Cleanliness and maintenance of Classrooms]	2412	11%	16%	22%	21%	26%	3%	100%
Rank the following facilities in a scale between 1 to 5. 5-Excellent 1-Very Poor [Facility for differently abled]	2412	11%	16%	26%	23%	19%	5%	100%

Rank the following facilities in a scale between 1 to 5. 5-Excellent 1-Very Poor [Functioning of Placement Cell]	2412	15%	17%	25%	21%	16%	5%	100%
Rank the following facilities in a scale between 1 to 5. 5-Excellent 1-Very Poor [Functioning of Grievance Redressal Cell]	2412	12%	17%	28%	22%	16%	5%	100%

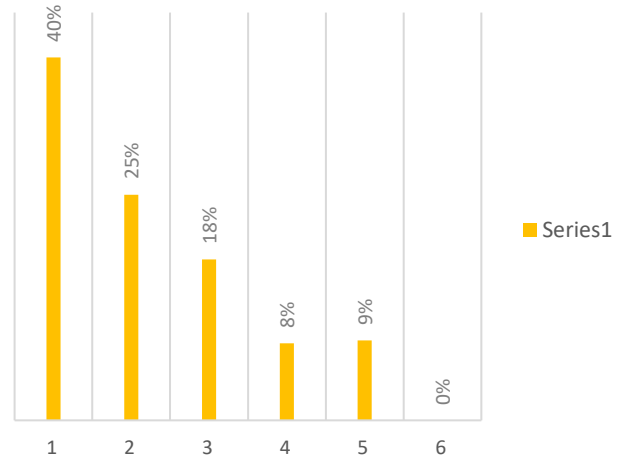
### Chart



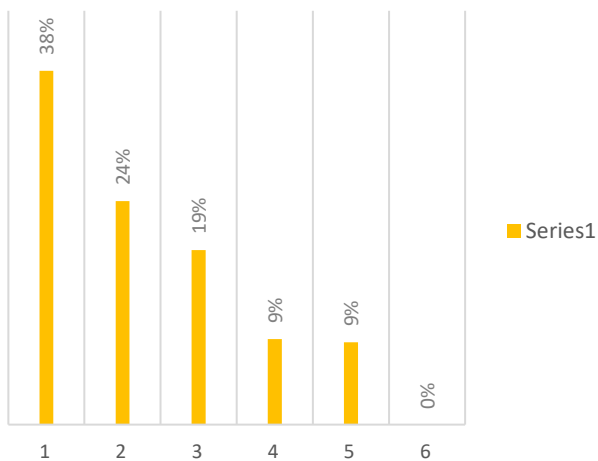
**E) THE TEACHER IS REGULAR AND PUNCTUAL IN CLASS.**



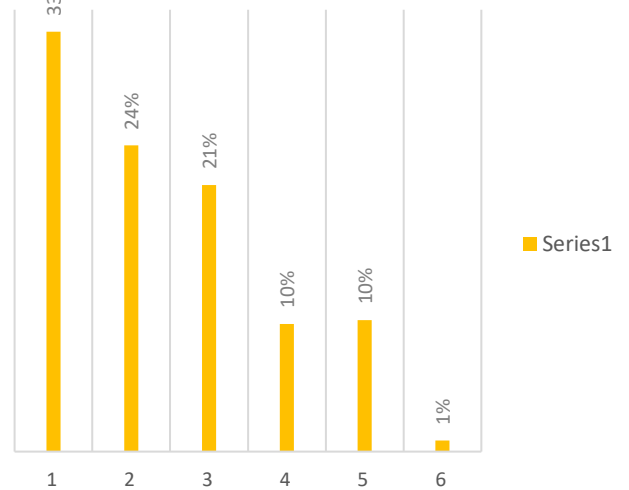
**F) THE TEACHER INVITES OPINION AND QUESTIONS ON SUBJECT MATTER FROM STUDENTS.**



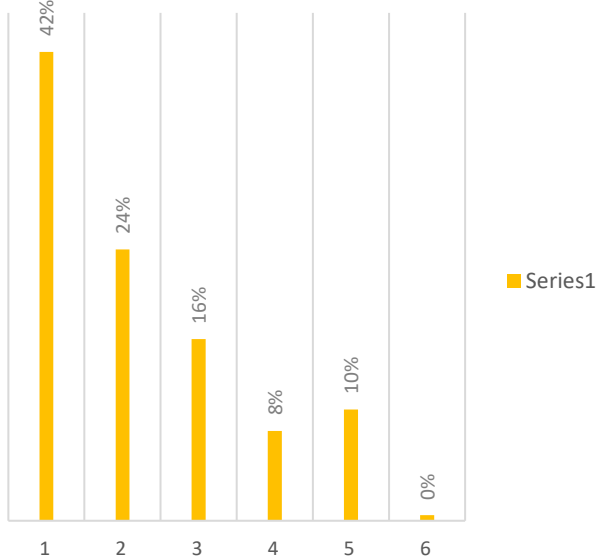
**G) THE TEACHER INSPIRES STUDENTS FOR ETHICAL CONDUCT.**



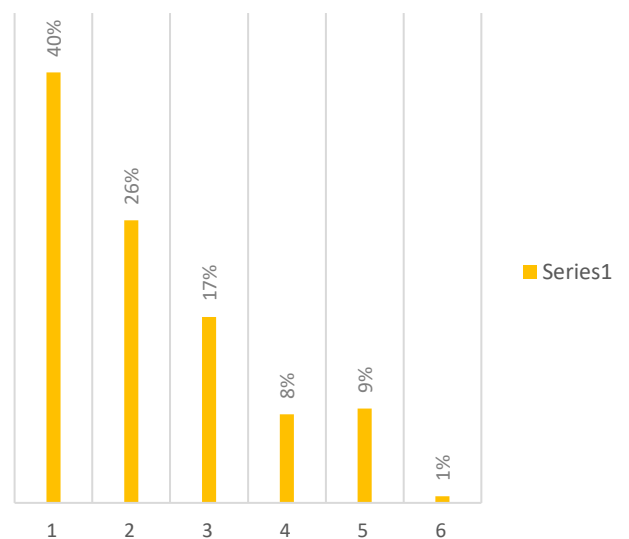
**A) PERIODICAL ASSESSMENTS ARE CONDUCTED AS PER SCHEDULE.**



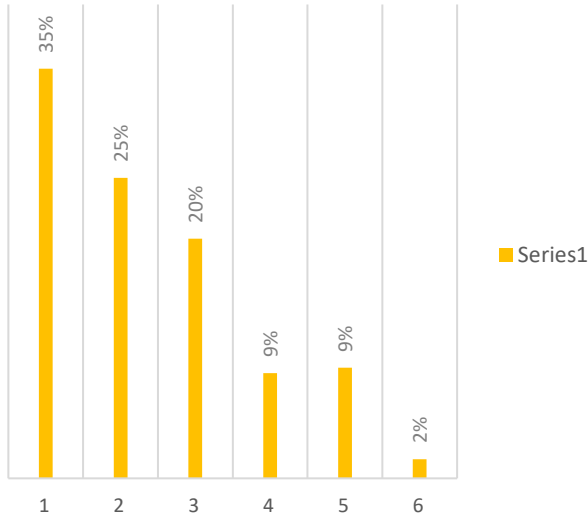
**B) THE TEACHER COVERS THE ENTIRE SYLLABUS IN TIME.**



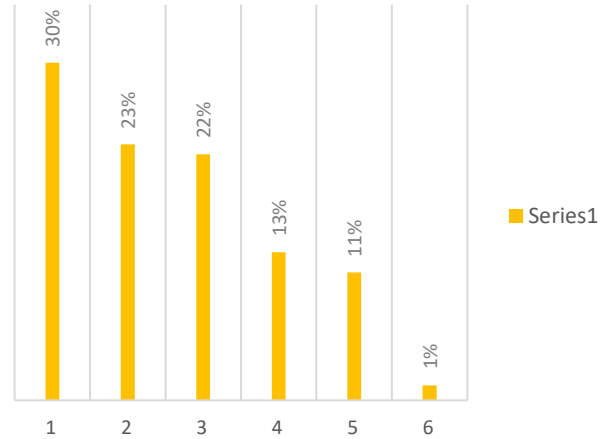
**C) THE TEACHER EXPLAINS THE TOPICS EFFICIENTLY.**



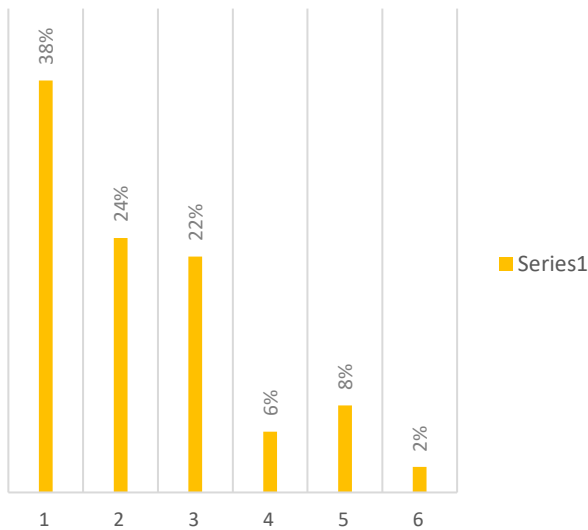
**A) PERIODICAL ASSESSMENTS ARE CONDUCTED AS PER SCHEDULE.**



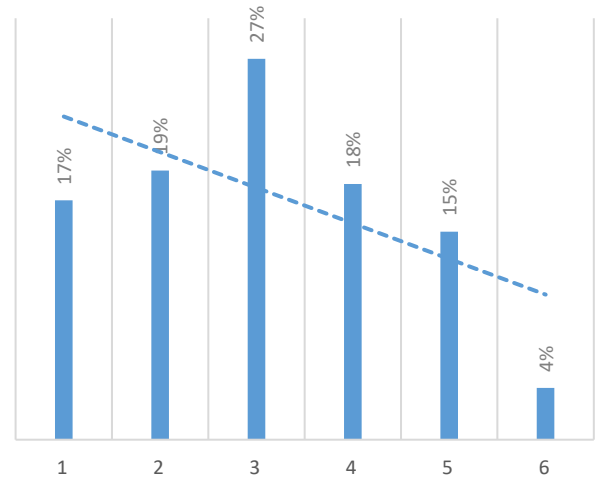
**B) THE TEACHER USES NON-TRADITIONAL METHODS OF EVALUATION LIKE QUIZ, SEMINARS, ASSIGNMENTS, CLASSROOM PRESENTATIONS/PARTICIPATION (OR ANY OTHER METHOD).**



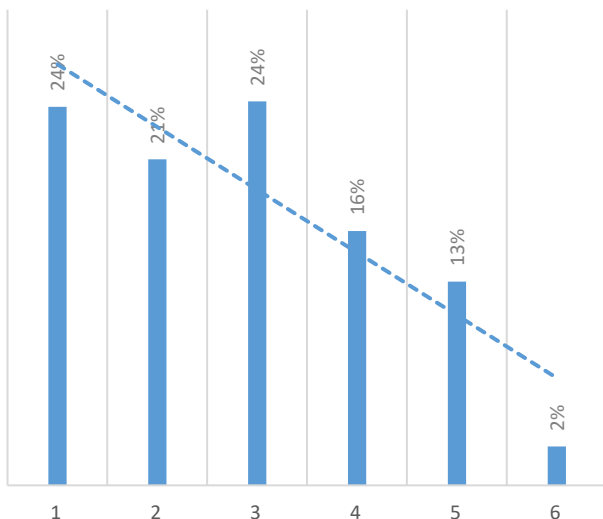
**C) FOR BETTER ACADEMIC PERFORMANCE, DO YOU THINK YOU NEED?**



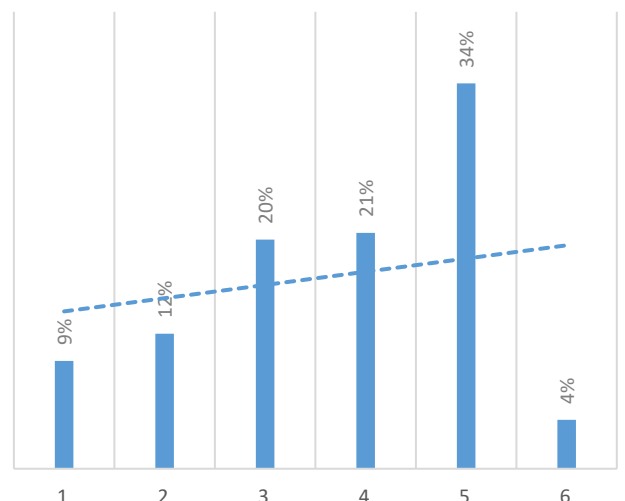
**RANK THE FOLLOWING FACILITIES IN A SCALE BETWEEN 1 TO 5. 5-EXCELLENT 1-VERY POOR [SPORTS]**



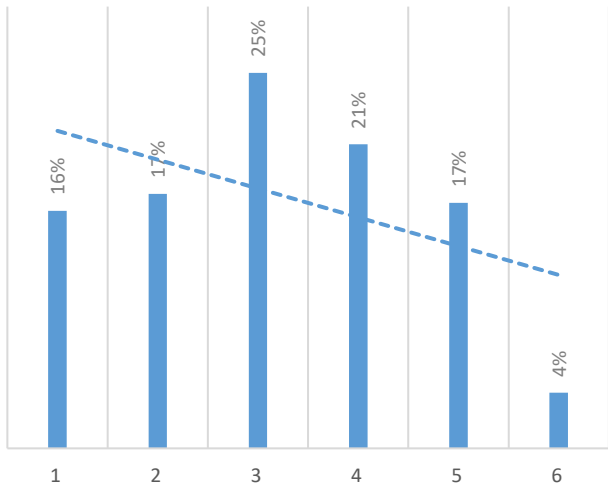
**RANK THE FOLLOWING FACILITIES IN A SCALE BETWEEN 1 TO 5. 5-EXCELLENT 1-VERY POOR [LIBRARY]**



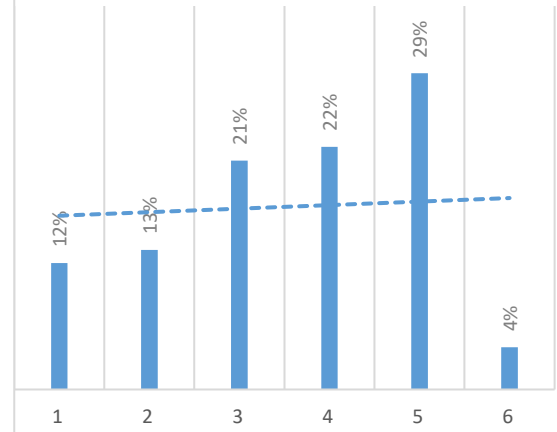
**RANK THE FOLLOWING FACILITIES IN A SCALE BETWEEN 1 TO 5. 5-EXCELLENT 1-VERY POOR [INTERNET FACILITY]**



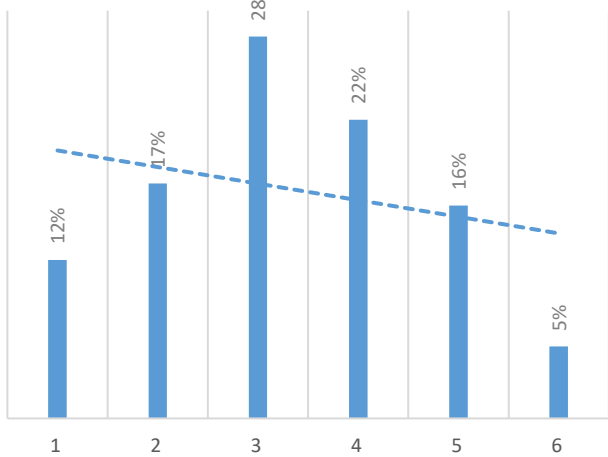
**RANK THE FOLLOWING FACILITIES IN A SCALE BETWEEN 1 TO 5. 5-EXCELLENT 1-VERY POOR [EXTRA CURRICULAR ACTIVITIES]**



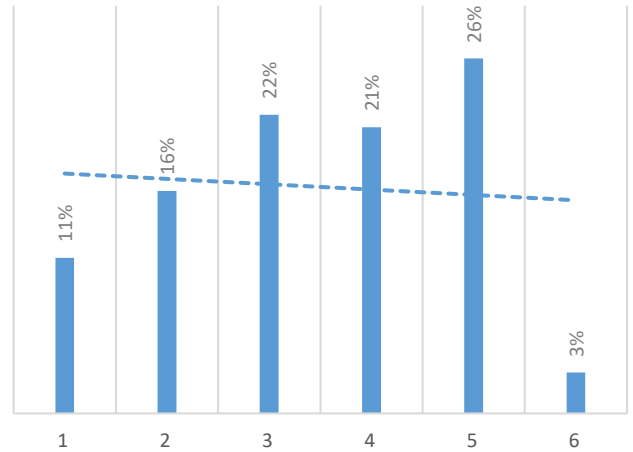
**RANK THE FOLLOWING FACILITIES IN A SCALE BETWEEN 1 TO 5. 5-EXCELLENT 1-VERY POOR [DRINKING WATER]**



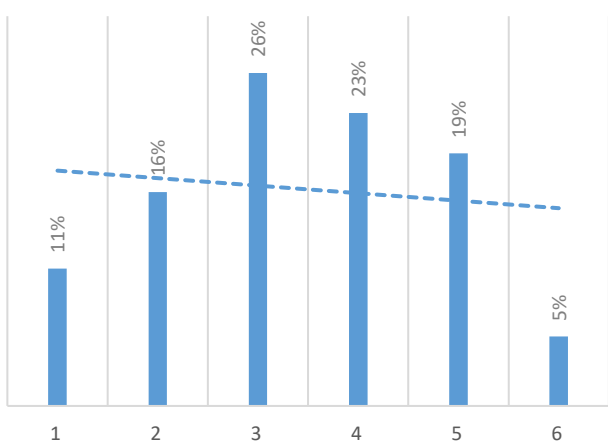
**RANK THE FOLLOWING FACILITIES IN A SCALE BETWEEN 1 TO 5. 5-EXCELLENT 1-VERY POOR [FUNCTIONING OF GRIEVANCE REDRESSAL CELL]**



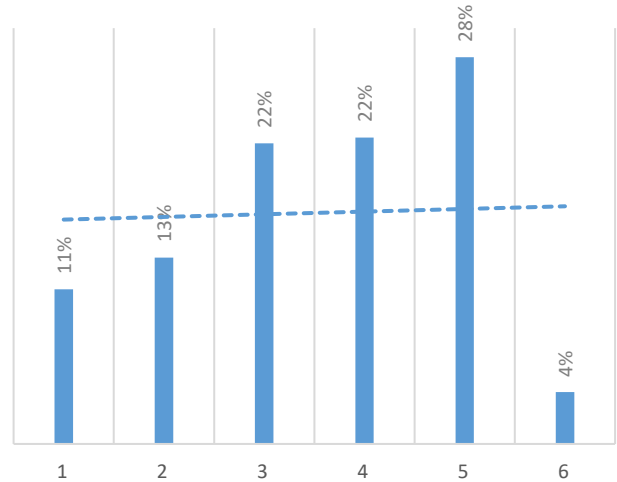
**RANK THE FOLLOWING FACILITIES IN A SCALE BETWEEN 1 TO 5. 5-EXCELLENT 1-VERY POOR [CLEANLINESS AND MAINTENANCE OF CLASSROOMS]**



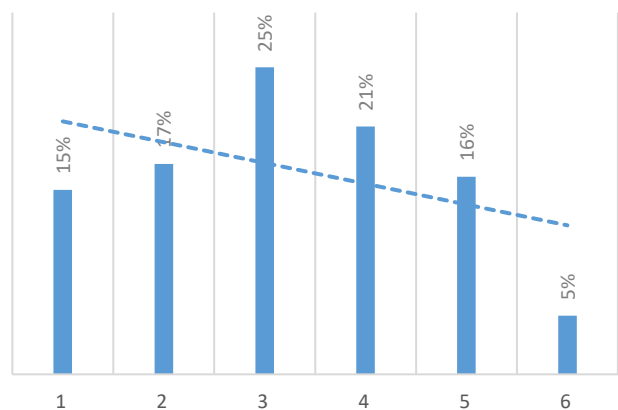
**RANK THE FOLLOWING FACILITIES IN A SCALE BETWEEN 1 TO 5. 5-EXCELLENT 1-VERY POOR [FACILITY FOR DIFFERENTLY ABLED]**



**RANK THE FOLLOWING FACILITIES IN A SCALE BETWEEN 1 TO 5. 5-EXCELLENT 1-VERY POOR [WASHROOMS]**



RANK THE FOLLOWING FACILITIES IN A  
SCALE BETWEEN 1 TO 5. 5-EXCELLENT  
1-VERY POOR [FUNCTIONING OF  
PLACEMENT CELL]



Note:  
5 = Excellent  
4 = Good  
3 = Average  
2 = Poor  
1 = Very Poor



Since 1949

# Ranchi Women's College

**(A Constituent Autonomous College under Ranchi University)**

Ranchi - 834001

AQAR – 2022 – 2023

Criterion I – Curricular Aspects

## **Students Feedback Analysis 2022-2023**

### **OBSERVATION**

#### **Teaching and Learning**

As per the feedback received from the students the college has an effective teaching learning system. The teachers are committed to provide academic and non-academic guidance and counselling within and off campus. However, a remarkable percentage (19 percent) of students are not very satisfied with the guidance received. The classes are made interactive in which participation of slow learners is emphasised. The usage of modern techniques like PPTs, quizzes, seminars, assignments, classroom presentations/participation by the teachers in making their lectures more effective has been acknowledged by majority of the students. It is apparent from the responses that the teachers are accountable and punctual in taking classes and finishing the syllabus within the time frame. The high positive response towards the ability of the teachers in explaining the assigned topics exhibit the proficiency of the teachers. Besides academics inculcating ethical values among the students is also thrust upon.

#### **Evaluation**

The responses reveal that the assigned syllabi are completed on time and assessments are made as per the schedule from time to time in order to assess the performance of the students. It may be inferred that the sessions are not delayed

#### **Infrastructure**

As per the feedback the Grievance Redressal Cell and the Placement Cells are quite active in addressing the needs of the students. Library resources are sufficient enough to cater to the needs of the teachers and students. Also, extra-curricular activities are taken care of for the overall development of the students. The conveniences for the differently abled are quite satisfactory.

As per the graphical illustrations majority of the students are not much satisfied with the infrastructure of the college like Sports, internet facilities, washrooms, drinking water, cleanliness and maintenance of classrooms.





Since 1949

## Ranchi Women's College

(A Constituent Autonomous College Under Ranchi University)

Ranchi - 834001

AQAR – 2022 – 2023

Criterion I – Curricular Aspects

### 1.4 Feedback System

#### Teachers Feedback Report (2022-2023)

Table

Questions	Total	Excellent	Good	Satisfactor y	Poor	Total
Q.1 Syllabus is suitable to the course	90	23%	69%	6%	2%	100%
Q.2 The course/syllabus has good balance between theory and application	90	27%	59%	12%	2%	100%
Q.3 The learning objectives are clear and appropriate to the program	90	31%	60%	9%	0%	100%
Q.4 The system followed by the university for the design and development of curriculum is effective	90	27%	60%	11%	2%	100%
Q.5 The curriculum has focus on skill development	90	38%	48%	13%	1%	100%
Q.6 The curriculum has updated time to time	90	41%	44%	11%	3%	100%
Q.7 The syllabus covers modern advanced topics	90	32%	59%	9%	0%	100%
Q.8 The syllabus is designed for the preparation of competitive exams	90	28%	58%	13%	1%	100%
	90	31%	56%	1%	2%	100%

90

34%

58%

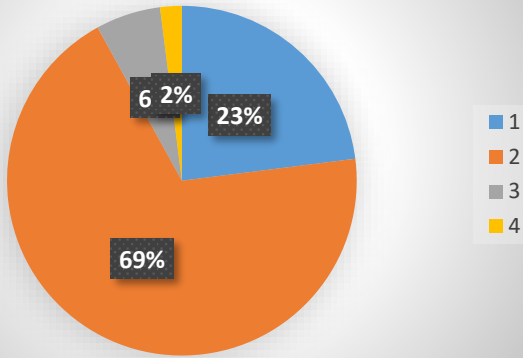
6%

2%

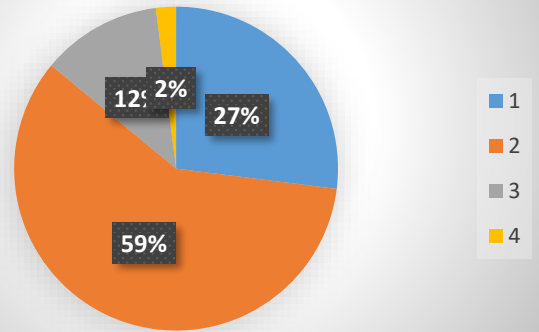
100  
%

### Chart

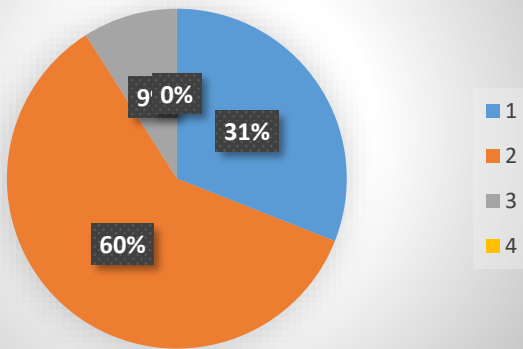
Q.1 Syllabus is suitable to the course



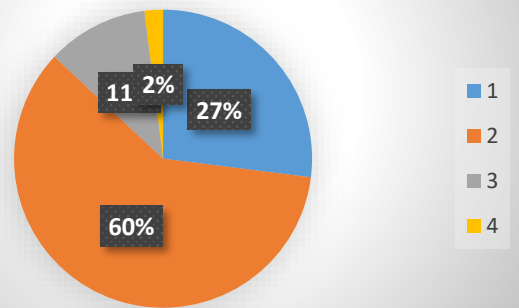
Q.2 The course/syllabus has good balance between theory and application



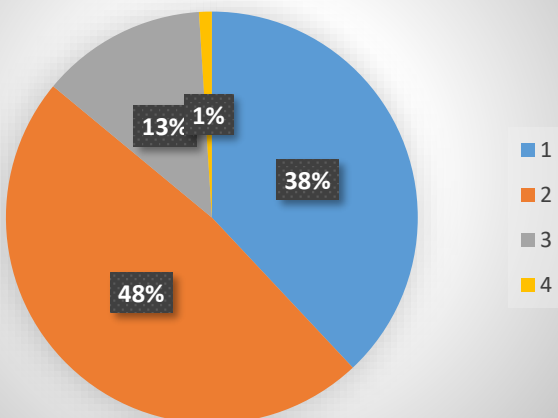
Q.3 The learning objectives are clear and appropriate to the program



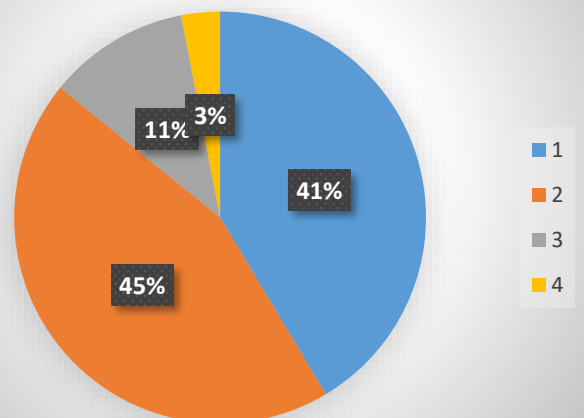
Q.4 The system followed by the university for the design and development of curriculum is effective



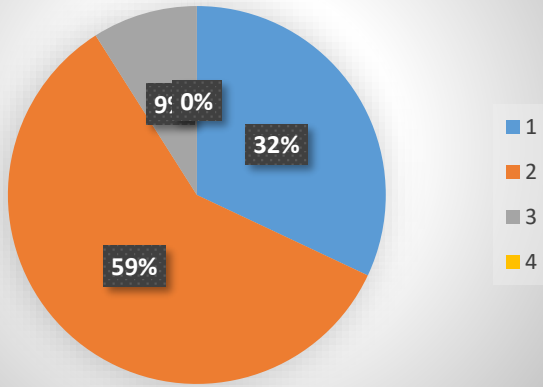
Q.5 The curriculum has focus on skill development



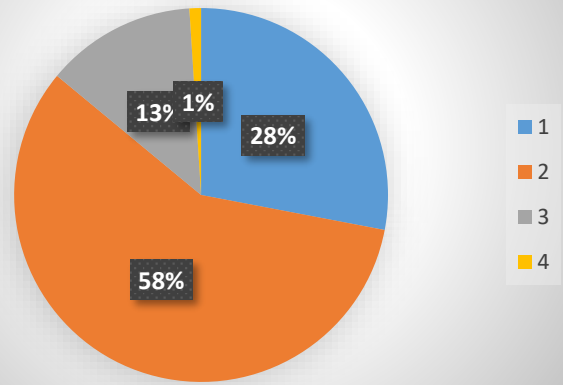
Q.6 The curriculum has updated time to time



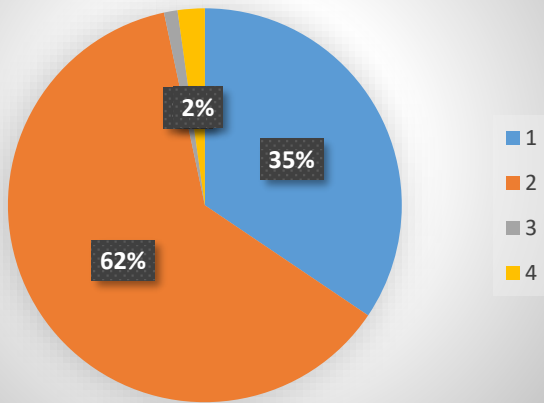
Q.7 The syllabus covers modern advanced topics



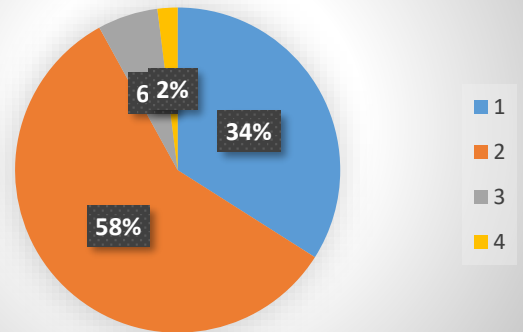
Q.8 The syllabus is designed for the preparation of competitive exams



Q.9 The syllabus is designed to improve employability



Q.10 The syllabus is interesting for majority of students



■ Excellent    ■ Good    ■ Satisfactory    ■ Poor



Since 1949

# Ranchi Women's College

**(A Constituent Autonomous College under Ranchi University)**

Ranchi - 834001

**AQAR – 2022 – 2023**

**Criterion I – Curricular Aspects**

## **Teachers Feedback Analysis 2022-2023**

### **OBSERVATION**

Most of the teachers are of the view that the syllabi of the College are suitable to the course creating a good balance between theory and application, with clarity and aptness in its learning objectives. The curriculum emphasises on skill development and prepares them for competitive exams thereby improving the employability, which makes it interesting for the students. The syllabus is updated time to time, till 2022 (during autonomy) with inclusion of modern advanced topics. The system followed by the University for the design and development of curriculum appears effective to most of the teachers specially for the NEP and the post autonomy revocation scenario.



Since 1949

# Ranchi Women's College

(A Constituent Autonomous College Under Ranchi University)

Ranchi - 834001

AQAR – 2022 – 2023

Criterion I – Curricular Aspects

## 1.4 Feedback System

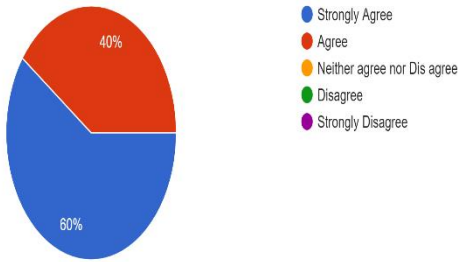
### Employers Feedback Report (2022-2023)

1. Curriculum imparts subject -specific/domain skills.
2. Curriculum prepares students for lifelong learning with the ability to adapt to changing times and needs.
3. Curriculum provides interpersonal/managerial skills.
4. Curricular, extra-curricular, & co-curricular activities prepare students with personal characteristics like attitude, behavior, character, dedication, ethics, foresight, and professionalism.
5. Curriculum focuses on communication skills, interaction skills, and presentation skills.
6. Curriculum encourages students to critically and creatively think.
7. Curriculum transaction is possible because of unlimited freedom and a sense of responsibility the college offers.
8. Special about the curriculum is that it has in-built life skills and career skills.
9. Curriculum can further be strengthened with periodical inputs from employers?
10. Curriculum can provide more hands-on and field-work experiences in each semester instead of more theoretical papers.

# Chart

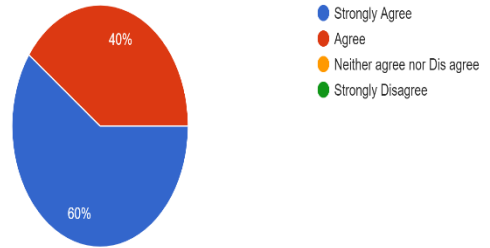
1. Curriculum imparts subject -specific/domain skills.

5 responses



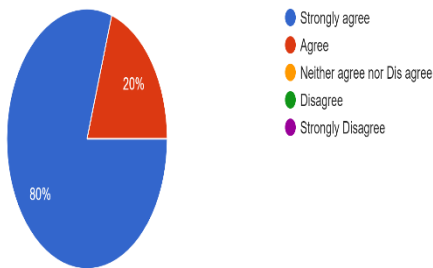
2. Curriculum prepares students for lifelong learning with the ability to adapt to changing times and needs.

5 responses



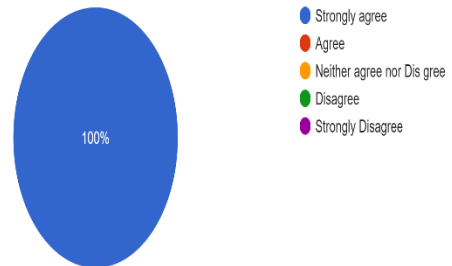
3. Curriculum provides interpersonal/managerial skills.

5 responses



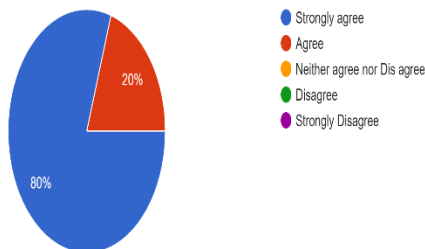
4. Curricular, extra-curricular, & co-curricular activities prepare students with personal characteristics like attitude, behaviour, character, dedication, ethics, foresight, and professionalism.

5 responses



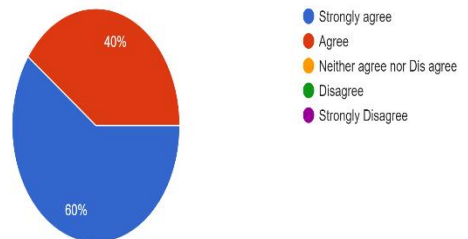
5. Curriculum focuses on communication skills, interaction skills, and presentation skills.

5 responses



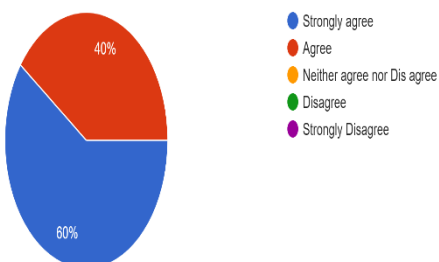
6. Curriculum encourages students to critically and creatively think.

5 responses



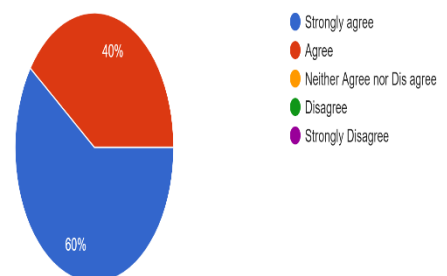
7. Curriculum transaction is possible because of unlimited freedom and a sense of responsibility the college offers.

5 responses



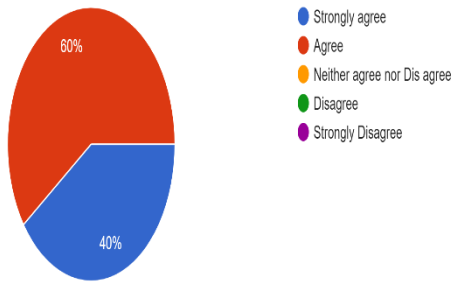
8. Special about the curriculum is that it has in-built life skills and career skills.

5 responses



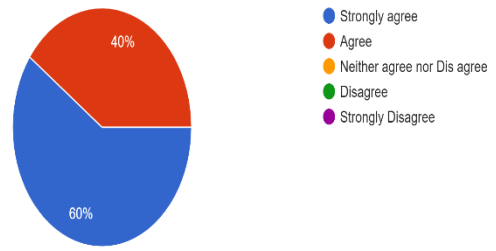
9. Curriculum can further be strengthened with periodical inputs from employers?

5 responses



10. Curriculum can provide more hands-on and field-work experiences in each semester instead of more theoretical papers.

5 responses





Since 1949

# Ranchi Women's College

(A Constituent Autonomous College Under Ranchi University)

Ranchi - 834001

AQAR – 2022 – 2023

Criterion I – Curricular Aspects

## Employers Feedback Analysis 2022-2023

### OBSERVATION

The curriculum of the College has been alluring enough for the companies and organisations approaching the College for campus placements. The employers have acknowledged the competence of the students following the curriculum as they have noticed a gradual improvement among the students during the third and the fourth round of interaction. They agree to the fact that the curriculum is well designed emphasising on communication, interaction and presentation skills which not only imparts subject specific skills but enables them to think critically and creatively and prepare the students for lifelong learning with ability to adapt to the changing time and needs. It is also evident from the feedback that the College offers unlimited freedom and a sense of responsibility for the curriculum to be effective. The Curricular, extra-curricular, & co-curricular activities incorporated in the curriculum prepare students with personal characteristics like attitude, behaviour, character, dedication, ethics, foresight, and professionalism. The subjects specially that of the vocational courses prepare the students with interpersonal and managerial skills. The employers agree to the fact that the curriculum can be strengthened through time-to-time inputs from the employers. All the respondents suggest more hands-on and field-based experiences instead of theoretical papers would be more effective.





Since 1949

# **Ranchi Women's College**

**(A Constituent Autonomous College Under Ranchi University)**

**Ranchi - 834001**

**AQAR – 2022 – 2023**

**Criterion I – Curricular Aspects**

**1.4 Feedback System**

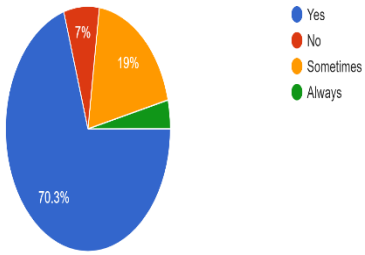
**Alumni Feedback Report (2022-2023)**

1. College curriculum fulfills our expectations.
2. The courses included in the program you studied.
3. How do you rate the sequence of topics in each unit.
4. State your opinion on the depth of course content.
5. The course content for Employment is.
6. The course content for Self-employment is
7. The course content for Higher Education is
8. How do you evaluate the curriculum in terms of improving new skills
9. How to enrich the curriculum

# Chart

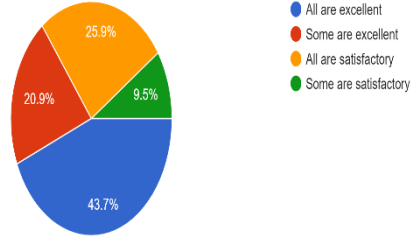
1. College curriculum fulfills our expectations.

158 responses



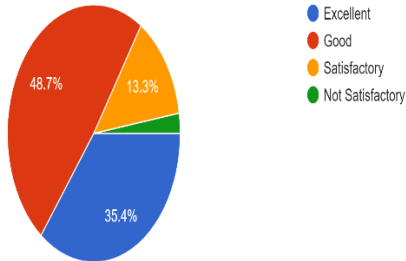
2. The courses included in the program you studied.

158 responses



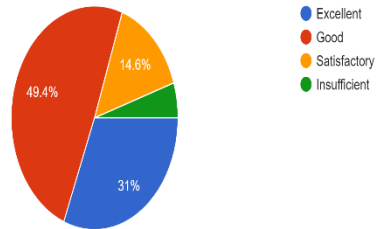
3. How do you rate the sequence of topics in each unit.

158 responses



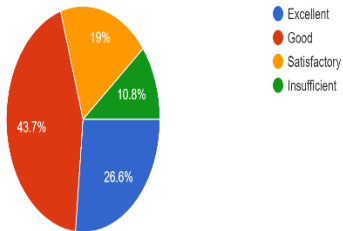
4. State your opinion on the depth of course content.

158 responses



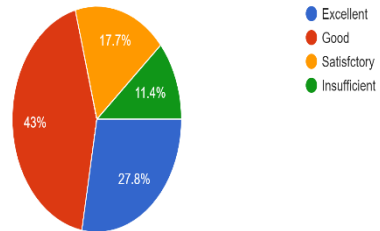
5. The course content for Employment is.

158 responses



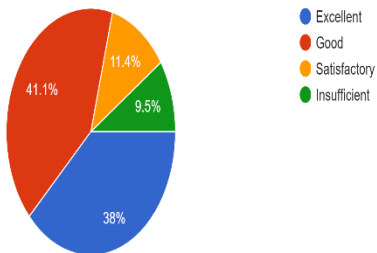
6. The course content for Self employment is

158 responses



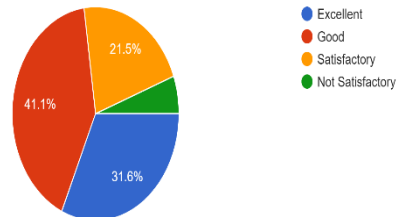
7. The course content for Higher Education is

158 responses



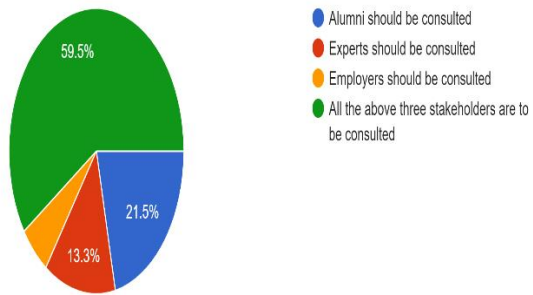
8. How do you evaluate the curriculum in terms of improving new skills

158 responses



## 9. How to enrich the curriculum

158 responses





Since 1949

# Ranchi Women's College

(A Constituent Autonomous College Under Ranchi University)

Ranchi - 834001

AQAR – 2022 – 2023

Criterion I – Curricular Aspects

## Feedback Analysis 2022-2023

### OBSERVATION

Nearly 75 % of the respondents agree that the curriculum of the college was up to their expectations to enable them to face the challenges of the world. However, 19% of them showed their disagreement perhaps because they wanted something specific. Majority among them are of the view that most of the courses included in the program they studied have been good. On an average the respondents agree that the sequence of topics in each unit of the curriculum is good. More than 50 % respondents are satisfied with the in-depth knowledge imparted by the course content, which enables them to be well placed in on-campus and off campus jobs. It also enables them to be self-reliant by having their own start-ups as they take up compulsory skill enhancement courses and job trainings, which have been effective in improving new skills. The course content is such that enables them to progress for Higher Education. The respondents are of a common view that in order to enrich the curriculum the inputs from the Alumni, Experts and Employers should be taken.

Few suggestions were given by the respondents regarding the inclusion of emerging areas in the specific fields remarkable among them were Pharmaceutical, R&D, Quality Assurance, Quality control, Forensic science, Applied chemistry, Biomedical science, Nanotechnology, Digital literacy, library media specialist, GIS GPS Remote Sensing Urban Planning, Gene Editing and CRISPR Bioinformatics and Computational Biology Synthetic Biology Precision Medicine, bacterial culture, molecular techniques, AI Measuring DEI Progress Inclusive Leadership and Accountability Technology-Enhanced D&I Training Inclusive Hiring and Retention Practices, Cloud Computing, Environmental microbiology, Medical biotechnology, Stem cell technology, Bioremediation, Explainable artificial intelligence, Quantum computing, Bioinformatics and computational biology, Ethics in technology, Indian art heritage, entrepreneurship development, Indian handloom, heritage, communication skills

## Action Taken Report

On the basis of the feedback received from the different stakeholders viz. students, teachers, alumni and employers the following decisions were taken by the IQAC

1. The classes would function properly as per the requirement of the NEP.
2. Workshops, seminars, Guest Lectures would be organised by the departments. Interdisciplinary topics are to be encouraged.
3. Publications in standard journals to be emphasised.
4. Infrastructure- sports, internet facility, library, drinking water, washrooms, gallery halls with audio-visual systems, canteen and common rooms would be strengthened.
5. Mentor-Mentee System to be strengthened.
6. Feedback system including that of teachers, students, employers and alumni to be strengthened.
7. Usage of Research Centre to be increased. Post Graduate students may be encouraged to use the research lab for their dissertation and project work. Important softwares like SPSS, QGIS, Adobe Photoshop, Wordpress, Canva.com, Myposterwall.com etc would be installed.
8. Field Trips, Field and industrial Visits, Trainings would be encouraged. It would be ensured that the training is of minimum four weeks.
9. Collaboration with the NGOs, Government Bodies and Research Centres to be encouraged. MoU with such organisations to be initiated.
10. Teaching and learning not to be confined to PDFs and YouTube links. These are to be used only as support tools.
11. Weekly students' seminars to be held in all the departments.

In order to execute the decisions taken by the IQAC the following actions were taken

12. Keeping in view the shortage of class rooms and the strength of the students the classes would be taken in hybrid mode in order to complete the syllabi on time.
13. High speed wi-fi connection has been installed in the campuses
14. Library periods have been included in the routine. The students are encouraged to visit the library during recess in order to inculcate in them a habit of reading books instead of depending completely on online sources and study materials provided by the teachers.
15. Several Workshops, Seminars and training programs have been organized by the IQAC in order to update the faculty members with latest teaching-learning techniques and also acquaint them with the nuances of NEP 2020. Short-term courses like computer literacy workshops have been conducted for the Grade III and Grade IV staff as well.
16. Placement and Training Cell of the college is also providing active support to students to improve their employability. Several workshops on skill development, communication skills and personality development are being organized along with offering platform to suitable employers for campus placement of the students.
17. National Apprenticeship Training Scheme under the Ministry of Education, Government of India has also been introduced in the college on 31<sup>st</sup> March 2023, in order to bridge the skill gap through on-the-job trainings and build a skilling ecosystem by cultivating a growth mindset and make students self-dependent.
18. In order to promote an Eco-friendly environment, the college has installed solar panels in both the blocks of the college and proper maintenance is ensured.
19. Several Plantation drives have been taken up as measures to create environmental consciousness among the students through active participation in making their surroundings green and pollution free. Eco-friendly practices are being promoted by the college by conducting regular seminars and creating awareness among the students through organizing competitive events. Practices like 'No Plastic Drives', use of LED bulbs and tubes and other energy conservation practices, tree plantation, offering potted plants instead of flower bouquet to the honorable guests are being promoted.